

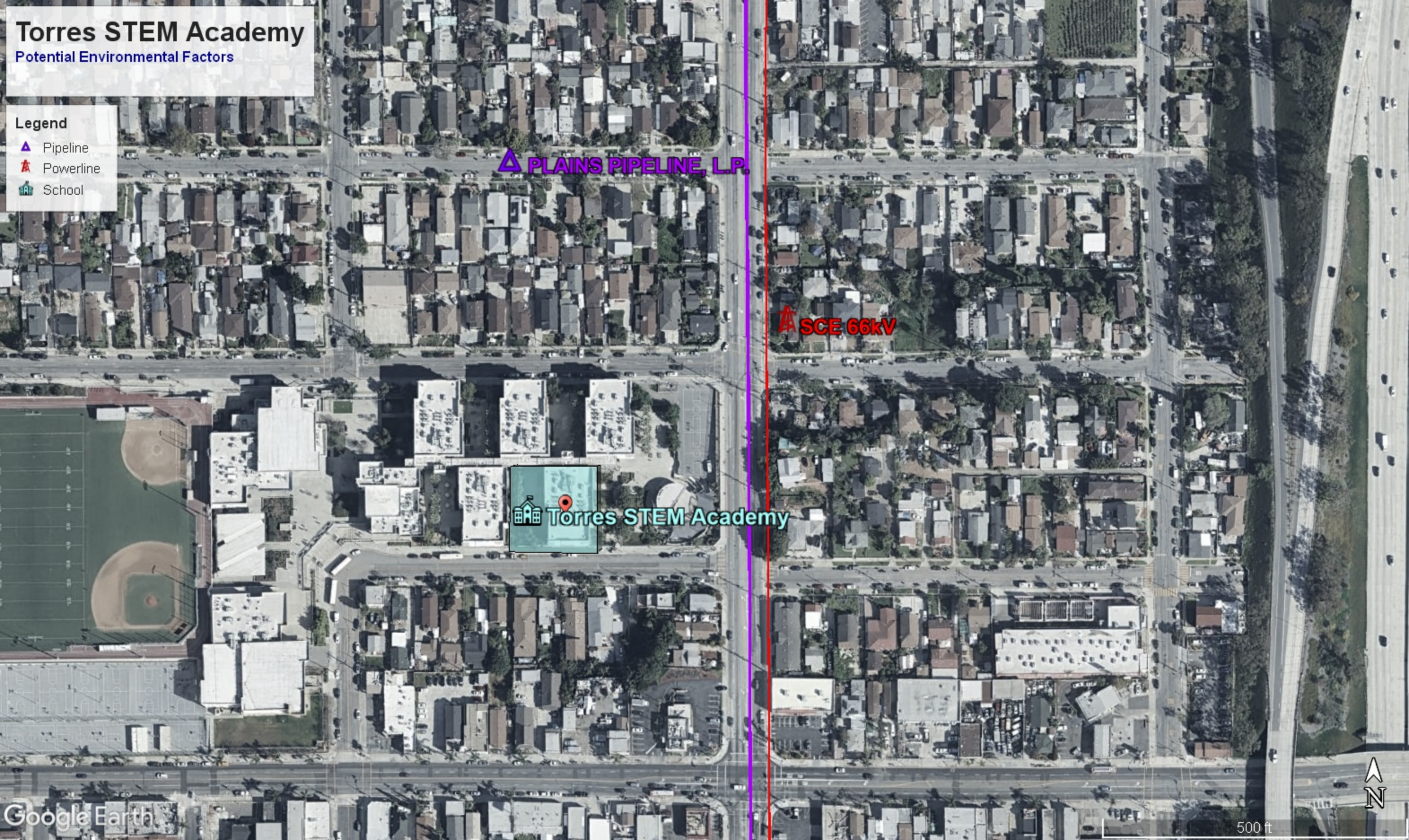


Environmental Hazards Survey






Torres HS - Humanitas Academy of Art & Technology (c.2010)	Principal		Deborah Lowe
4211 DOZIER ST, LOS ANGELES, CA 90063	E-mail		dlowe1@lausd.net
323-265-6830	Site ID		13388
	Yes	No	Notes
Rail line (active, easement, or spurs) within 128 ft?		X	
Cellular phone antenna adjacent or on site?	X		Onsite (L.a. Philharmonic Associations)
50-200 kilovolt (kV) power line within 100 ft (above ground)/25 ft (below ground)?	X		SCE 66 kV overhead power line 25 ft east of the site
200-230 kV power line within 150 ft (above ground)/37.5 ft (below ground)?		X	
500-550 kV power line within 350 ft (above ground)/87.5 ft (below ground)?		X	
Major transportation corridor within 500 ft?		X	
Reservoirs, water, or fuel storage tank facilities within 500 ft?		X	
Haz mat transmission pipelines within 50 ft?	X		Plains pipeline 40 ft east of site
Oil production facilities (existing or former oil wells/borings and processing equipment) within 50 ft?		X	
Located within an Oil Field / Methane Zone / Methane Buffer Zone?		X	
Located within a High Risk Radon Zone?		X	
Superfund Site within 500 ft?		X	
Landfill facility within 500 ft?		X	
Mapped or active earthquake fault within 500 ft?		X	
CalEPA Regulated Sites of Concern* within 500 ft?	X		Jack in the Box 190ft south of site, C & R Auto Electric 50 ft. west of site
<p>* The CalEPA Regulated Site Portal (Portal) combines data about environmentally regulated sites and facilities in California into a single, searchable database and interactive map. To use the Portal to identify facilities near an LAUSD school:</p> <ul style="list-style-type: none"> - First zoom in to a school location on the map by either using the search bar to enter the school's address or by using a mouse and zoom tools - Once the user has zoomed in to a school site, the map shows all the regulated sites near the school - Users can click on the regulated sites to find out additional information about the sites - The Portal also includes tools to measure the distances between locations on the map 			
Here is a link to the CalEPA Regulated Site Portal:	https://siteportal.calepa.ca.gov/		

This survey was completed in 9/22.




Torres STEM Academy

Potential Environmental Factors

- Legend**
-  Pipeline
 -  Powerline
 -  School

 **PLAINS PIPELINE, L.P.**

 **SCE 66kV**

 **Torres STEM Academy**